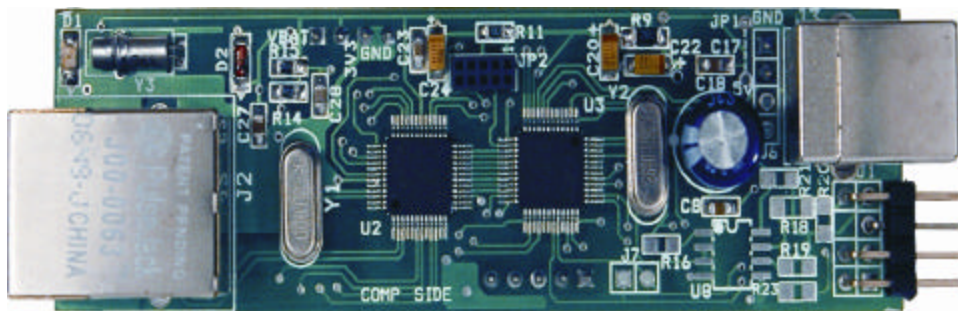


# Ethernet Bridge

SHRESTA—INNOVATING ELIFE.

SBridge-340 serial device server is designed to make your industrial serial devices Internet ready instantly for wide market applications. The compact size of SBridge-340 device server makes it the ideal choice for connecting your RS-232 or RS485 serial device, such as a card reader or payment terminal, to an IP-based Ethernet LAN, making it possible for your software to access serial devices located anywhere on a local LAN or the Internet.

- Versatile socket operation modes, including TCP Server, TCP Client, UDP Server / Client, HTTP, DHCP Server, DHCP Client
- Easy-to-use Windows Utility for testing and data verification.
- Configuration of Baud rate and IP address via Serial or Ethernet
- On Board RTC with Alarm Function
- On Board NV Data memory up to 1Mbits
- 8 Channel Single Ended 10 bit ADC Channels
- Easy programming via on board JTAG Port
- On board USB 2.0 client
- Power through Serial / USB or External 5V Power Source
- Programmable Digital IO Port
- Very Low power consumption



Top View

**Shresta**  
**eTechnologies Pvt**  
**Ltd**

- Serial to Ethernet Converter
- RS485 / RS422 / RS232 / USB / Ethernet / DIO / RTC / EEPROM / ADC on one Module
- Low cost Design
- Compact Size (27mm x 90mm)



**SBridge - 340-S**  
Basic Serial to Ethernet converter for just INR 999\*

\* MOQ 1K

**Shresta eTechnologies Pvt Ltd**

#78/1, 3rd Cross,  
Gavipuram Extension,  
Bangalore-560019, INDIA

Phone: 91-80-26605892 /  
26605373

Fax: 91-80-22424073

E-mail: [info@shrestatech.com](mailto:info@shrestatech.com)

[www.shrestatech.com](http://www.shrestatech.com)

 **Shresta**  
SHRESTA e TECHNOLOGIES PVT. LTD.,